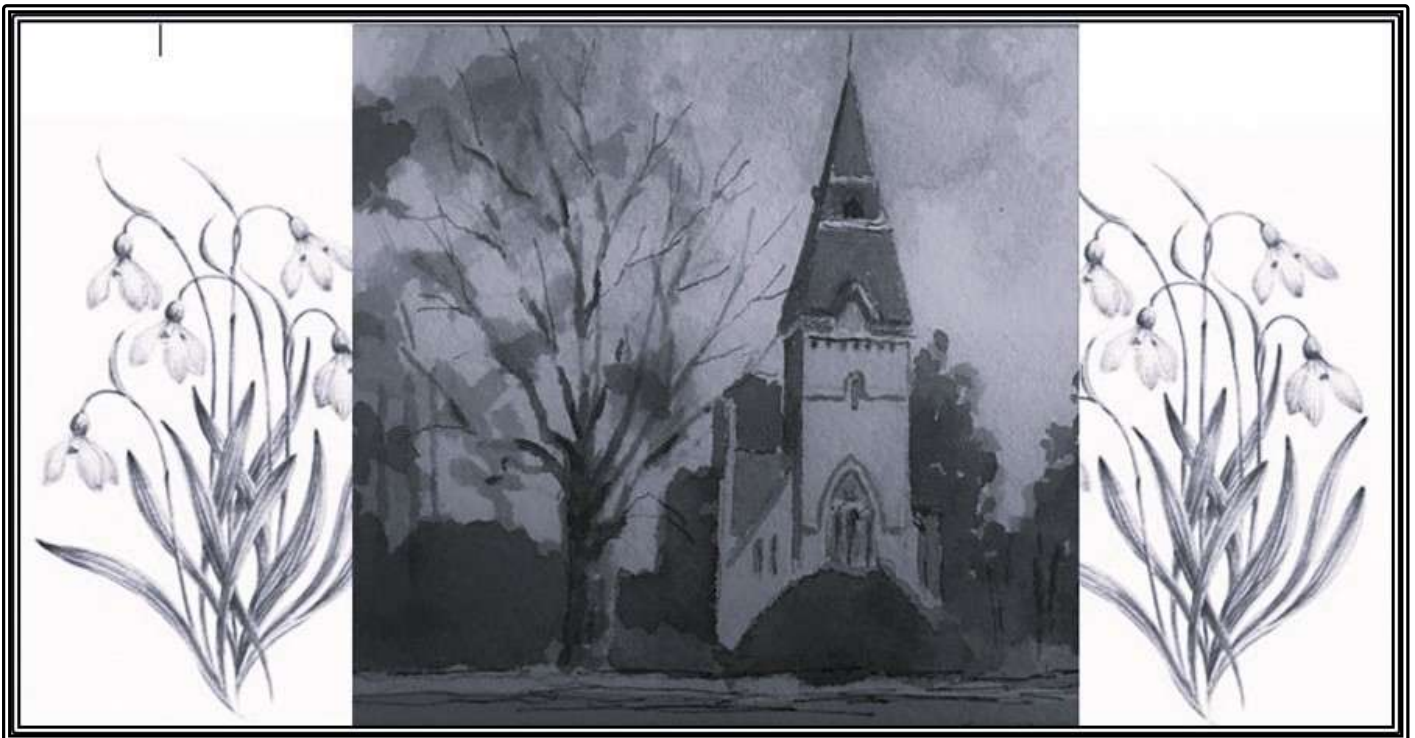


Swanley Village News

Issue No.135

March 2025

The Newsletter for the residents & friends of Swanley Village



Useful Contact Details

Residents' Association	e: SwanleyVillageRA@outlook.com
Residents' Association Secretary	Ghaz Stott Everett e: ghazstotteverett@icloud.com
Swanley Village Trust	e: swanley_village_trust@yahoo.co.uk
Swanley Village Website	w: www.swanleyvillage.uk
Cllr Michael Horwood	e: mhorwood@swanleytowncouncil.gov.uk
Cllr Roger Gough	t: 01959 525109 e: roger.gough@kent.gov.uk
Cllr Chris Prestedge	t: 07733 152862 e: CPrestedge@swanleytowncouncil.gov.uk
Swanley Village Life Group	David Pearson t: 01322 614237
Swanley Village 100 Club	Keith Rowland t: 01322 662415 e: mistover1@aol.com Steve Hunt t: 01322 668584
Hextable & Swanley Village WI	Janet.Burnett@btinternet.com
Kent Police	w: www.kent.police.uk PC 15621 Shipley (Steven) is PC for Swanley and Swanley Village
Fly Tipping	Sevenoaks District Council t: 01732 227000
Anti-Social behaviour	e: community.safety@sevenoaks.gov.uk
Advertising in Swanley Village Newsletter	e: SwanleyVillageRA@outlook.com

FACEBOOK

We have a community page on Facebook. To see and to tell others what is going on in the village, plus photos and news, search for '**Swanley Village News**' community page. We are also **@swanley_village** on Twitter

Dates For Your Diary

Sunday 9th March Daffodil – Walk 2-4pm The Old Vicarage

Easter Sunday 20th April – Easter Egg Hunt 11am Village Green

Saturday 12th April – Village Quiz Five Wents 7.30pm

Monday 12th May – Swanley Village Trust & Residents' Association
Annual Meetings 8pm St Paul's Church.

Save the Date

Saturday 14th June 2-5pm – SUMS Summer Fete The Old Vicarage

Friday 27th June – Inflatable Fun Day 3.15pm St Pauls School

Saturday 1st November 6pm – Village bonfire and fireworks.

WELCOME PACK – If you are new to the village and would like an introduction to all the activities and information regarding all your surroundings, please email [*Swanley_Village_Trust@yahoo.co.uk*](mailto:Swanley_Village_Trust@yahoo.co.uk)

Glebe Gate: Volunteers (perhaps dog walkers?) are still being sought to join the group to lock and unlock the Glebe Gate, a.m. & p.m. and in School holidays.
If you wish to join this band of volunteers for a short Rota period, please contact Barbara Ramsey ☎ 07711 068606

Swanley Village Residents' Association

Beware men on phones! A villager recently answered her doorbell to find a man on the doorstep engaged in a phone call. Without leaving his call he simply said "Plumber" and tried to step inside her house. Fortunately, she was quick enough to close the door on him. PC Shipley has said that there have been at least two other incidents in the area recently.

I can assure everyone that all means are being explored to achieve the removal of the **black van** that has been parked in School Lane since October last year.

Kent Highways did some speed monitoring in January and concluded that there has been a reduction of speed of approximately 2 mph since their last measurements in 2021. Whilst this represents a success of sorts, the results for Highlands Hill in particular show that 15% are travelling over 30mph and less than 25% are observing the limit. The Residents' Association will continue to press for more signage and to extend the **20mph limit** to the whole village.

Spring Clean. Swanley Town Council is kindly providing a skip on the weekend of **21, 22 and 23 March**. Please use this opportunity to clear some of the rubbish that has accumulated through the winter. As usual black bags, litter pickers and hi-vis jackets will be available from the porch at 5 Hogs Orchard.

Thank you to all those who responded to my request in the last newsletter for an annual £5 donation towards running costs. If you missed that then to pay online by bank transfer, the details are:

Sort code: 30-98-97

Account number: 82997563

Please use your name as a reference for the payment and send an email to SwanleyVillageRA@outlook.com to let us know you have paid.

Please consider setting up a standing order. Cash or cheques (**made payable to Swanley Village Residents' Association**) send to:

Rachel Wallis, Treasurer, SVRA, 5 Hogs Orchard, Swanley Village

Bob Wallis, Chair



SWANLEY VILLAGE LITTER PICK
FRIDAY 21st MARCH to SUNDAY 23rd MARCH
CLEAN A HEDGEROW, A VERGE, A ROAD OR A
FOOTPATH
KEEP OUR VILLAGE LOOKING
LOVELY
BIN BAGS, PICKERS AND HI-VIS JACKETS FROM
THE PORCH AT 5 HOGS ORCHARD

How to report used nitrous oxide cans

Nitrous oxide, also called 'laughing gas', damages the health of users. The canisters also pose a danger to our staff.

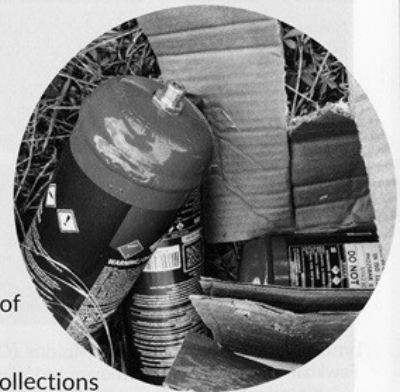
Nitrous oxide has health impacts for users. It can lead to mental health problems, a weakened immune system and damage to the lungs and brain.

It's also a Class C drug. Possession or sale for recreational purposes is a criminal offence. Anyone caught with nitrous oxide could face a caution, community service, a fine or up to two years in prison.

The cans, and other gas canisters, also pose a serious danger to our waste collectors and street cleaners who pick them up. They can explode in the back of collection vehicles, injuring staff.

Because of the risks, we make special collections for discarded nitrous oxide and other gas canisters.

To report the location of discarded gas canisters, please email information@sevenoaks.gov.uk or call 01732 227000.



Swanley Village Trust

Quiz Night Saturday 12th April 7.30pm Five Wents Hall

Our regular get together for serious and not-so-serious quizzers, including fish & chip supper. All welcome £12 per ticket and up to 8 per table. Email the trust at: swanley_village_trust@yahoo.co.uk or drop a note through the door at 5 Hogs Orchard with your contact details to reserve your table.

Annual Meetings Monday 12th May 8pm St Paul's Church

The Trust and the Residents' Association hold their annual meetings and all villagers are welcome.

Inflatable Fun Day Friday 27th June 3.15pm St Paul's School

The Trust is joining with our brilliant Primary School PTA for an afternoon of fun and fundraising. There will be a bouncy castle, slides, bar, BBQ and other refreshments. If you can help out in the afternoon, please email: swanley_village_trust@yahoo.co.uk

Bonfire Night Saturday 1st November Village Green

Everyone's favourite venue for fireworks, hot dogs and a tippie!

Swanley Village Trust promotes events for the benefit of villagers and to help raise funds to maintain the **Village Green**. The Community Payback team has been working through the winter, cutting back the brambles and allowing light to the trees. They also help with maintenance in the churchyard, so if you need any help with upkeep of a grave, please ask.

By supporting any of the Trust's fundraising events and by participation in the **100 Club (thank you Steve and Keith!)** you help keep the beautiful recreation space in the village centre for everyone and for posterity!

Swanley Village

Sunday 9 March
12.00 – 16.00



The Old Vicarage
BR8 7PJ

Registered charity no. 1121541

Join us for a special celebration in the stunning grounds of the Old Vicarage as we mark 40 wonderful years of our family in the beautiful village! Stroll through a breath-taking carpet of golden daffodils, enjoy the peaceful surroundings, and share in the joy of this milestone with friends and neighbours. A perfect way for all ages to soak in nature and community spirit. We look forward to welcoming you.

Parking:

Parking available in field nextdoor or Church car park
Disabled parking available on request

Dogs:

Well behaved dogs on leads welcome

Toilets:

Available on request.
Accessible to all


Wheelchairs:

Access at main gate

Refreshments:

Tea/Coffee/Juice
Homemade Cake
Raffle

£5 adults
Under 16s free



Swanley Village 100 Club is run by Swanley Village Trust to support its work maintaining the Village Green. It costs £1 per week paid annually in advance. Monthly prizes of £25, £50 and £100 are drawn. Membership renewal is in August each year. Contact Steve or Keith to find out more: mistover1@aol.com

County Councillor's Report

Roger Gough

In early January Kent County Council carried out traffic counts to assess how the 20mph zone is working.

The overall results were quite encouraging, with average speeds in most of the roads covered by the zone around 20mph, and certainly well within the enforcement speed limit of 24mph. The exception is Highlands Hill, where the average speeds were 24.3mph



(eastbound) and 24.9mph (westbound). Even this is a 2mph reduction in average speeds, but nonetheless is still too high. I am continuing to work with Kent Highways on signage and other changes that can further improve the effectiveness of the zone, both in Highlands Hill and elsewhere.

The promised works by our drainage team to cleanse and dig out the culvert, removing mud, debris and vegetation took place in early November.

As I have mentioned in a previous newsletter, KCC bid successfully to Sevenoaks District Council's Community Infrastructure Levy (CIL) for improvements to SD92, which should improve pedestrian links from the Highlands Grange end of Highlands Hill to the centre of the village. These works are scheduled for the coming financial year (starting in April) and I hope to be able to set out more details of this soon.

Kent-wide, we have recently approved the KCC budget for 2025-26; finances remain tight, with significant pressures in areas such as adult social care, but in this we share the experience of local government across the country and have demonstrated more resilience than many. KCC and Medway Council applied to join the government's Devolution Priority Programme, which we believed would be of real benefit to residents of the county on matters such as transport, skills and infrastructure. Shockingly, we were turned down, in contrast to many of our neighbours and for no obvious or justifiable reason; we will continue to pursue this with government.

As ever, I can be reached by phone (01959 525109) or by email, roger.gough@kent.gov.uk My website, www.roger-gough.blogspot.co.uk reports on what I'm doing across the Sevenoaks North and Darent Valley Division, and I am on Twitter @RogerGough2 and on Facebook www.facebook.com/RogerDVKent

SWANLEY VILLAGE TRUST

FUND RAISING EVENT

Booking now!

QUIZ NIGHT

Saturday 12th April

with Fish & Chip Supper

FIVE WENTS HALL 7.30 pm

£12 p/p – organise a team (max 8 per table) or come on your own and get to know some new people!
Bring your own drinks, glasses, cutlery, condiments

Email the Trust at: swanley_village_trust@yahoo.co.uk

Or drop a note through the door with your contact details to 5 Hogs Orchard

Tickets are limited for this popular event!!

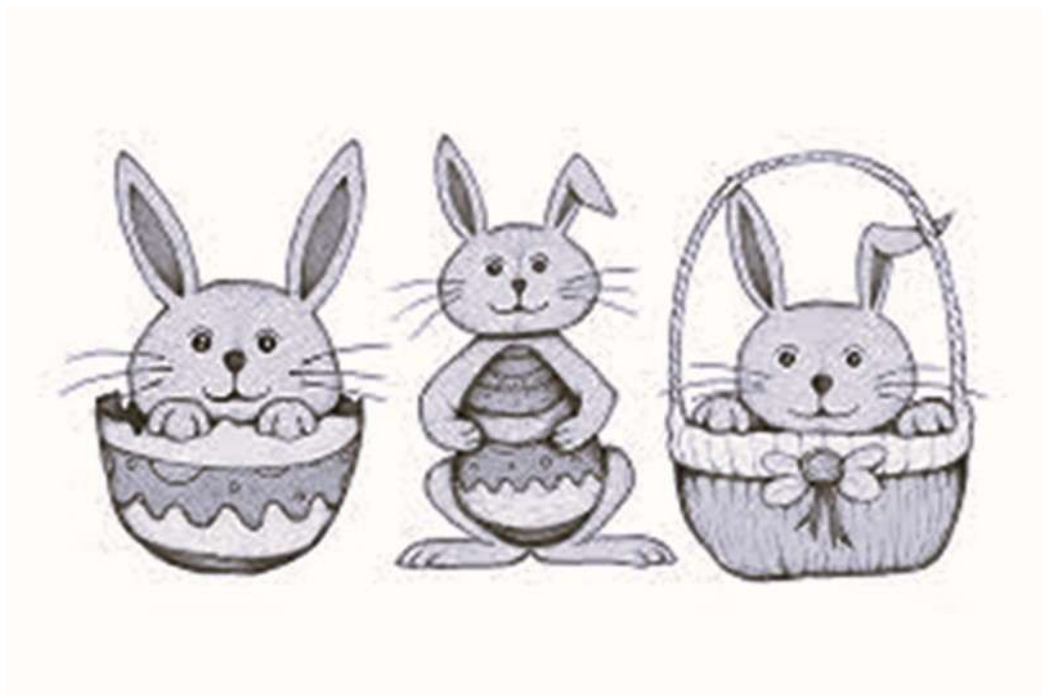


Sunday 20th April 2025 – Easter Sunday

11am until 12 noon

On the Village Green

There will be an Easter Egg Hunt on Easter Sunday for the children of villagers and their friends. Please just come along and collect your ticket and basket from Donna on the day.



St. Paul's CE Primary School



As we settle into the new term, it is a pleasure to reflect on the many exciting successes we've had at St. Paul's Church of England Primary School. The return from Christmas break has brought with it renewed energy and enthusiasm and our children have jumped straight back into their learning with a true sense of curiosity and commitment.

One of the highlights this term has been the school trips to the Wildwood Trust and the Tower of London. These outings provided our children with truly enriching experiences that brought learning to life in ways that simply cannot be replicated in the classroom. At the Wildwood Trust, our children were able to get up close to native wildlife, learning about the importance of conservation and the role each creature plays in maintaining the balance of our natural world. They had the opportunity to observe a variety of animals in their natural habitats, and the hands-on activities really sparked their curiosity and love for the environment. Additionally, as part of their history curriculum, the children took part in an engaging Anglo-Saxon workshop, where they learned about the life and culture of the Anglo-Saxons. They explored artefacts, recreated some of the tools and crafts from that period and discussed how the Anglo-Saxons interacted with the environment, making meaningful connections between history, nature, and the world around them.

Meanwhile, the visit to the Tower of London offered a fascinating journey through British history, allowing our children to step back in time and witness the stories of kings, queens and the fascinating heritage of our nation. From exploring the Crown Jewels to learning about the Tower's role in the history of the monarchy, the children were fully engaged in the experience. The trip provided an invaluable context for their current studies, as they will be writing an essay about

who they think was the most significant medieval monarch and why. The Tower, with its deep historical significance, was the perfect setting for them to explore this question, bringing history alive and giving them the opportunity to connect classroom learning with real-world contexts in a way that was both educational and fun.

Thanks to the incredible support from our parent helpers, we have also made exciting updates to the Maple Classroom. With the addition of new furniture, the classroom is now more flexible, offering children greater autonomy in their learning. The variety of seating options allows for a more dynamic and interactive environment, empowering the children to take ownership of their learning in a way that suits their individual needs.

The Compass Federation, comprised of St. Paul's, Dunton Green and St. Edmund's, also had the unforgettable experience of attending the *Young Voices* event at the O2 Arena in London. It was a truly special moment for our schools to come together, sharing in the joy of music and creating memories that will last a lifetime. We will now be rehearsing for our Night of Young Voices concert which the wider school community will be warmly invited to attend.

As always, we are grateful for the ongoing support from our village community, and we look forward to continuing our journey of learning, growth, and success throughout the term. We are inspired by the words of Jesus from John 10:10: "I have come that they may have life and have it to the full." This vision continues to guide our approach to education, encouraging every child to live life in all its fullness through rich experiences, love and learning.



JAMES JOHNSON
Head of School

St. Paul's Church of England Primary School
School Lane, Swanley Village, BR8 7Pj
Tel: 01322 664324
www.st-pauls-swanley.kent.sch.uk



St. Paul's Primary School
Invites you to an



Friday 27th June
3.15pm onwards
Swanley Village Glebe

Childs wristbands
available to
purchase from the
PTA



Bouncy Castles, Slides,
Obstacle courses, Bar, BBQ,
Hot drinks, Cakes and more...

This event is being run with the **Swanley Village Trust**
and **open to all!**

Whether you are new to the Village, have a child at the
School or are a regular at the School/Village fund raisers
please join us for an afternoon of fun with the local
community.

Stpaulspta@hotmail.com

Swanley_village_trust@yahoo.co.uk

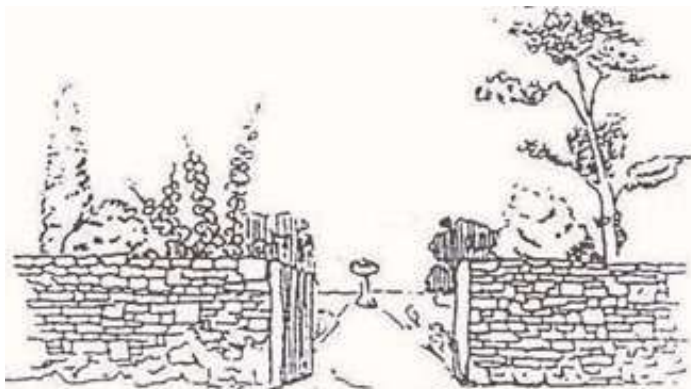


Next Door Hextable Afternoon Tea

Join us for delightful afternoon tea with an assortment of sweet and savory treats.
£15 per person with a Tea or Americano
£18 per person with a Barista drink.

Please pop into the cafe to see either Gemma or Suzanne, to book in and pay to secure your place

 THURSDAY 27TH MARCH
2pm - 4pm
 NEXT DOOR HEXTABLE CAFE



The Quiet Garden Movement

A warm welcome awaits at Sanctuary Quiet Garden in Swanley Village, Kent! The garden offers a peaceful retreat in nature, featuring separate areas for quiet, solitude, and prayer, perfect for personal reflection and renewal. Whether you're seeking time alone or want

to join with others for a reflective quiet day reach out to Sanctuary.

Email: sanctuaryakwaaba@gmail.com

or see: <https://quietgarden.org/gardens/sanctuary-quiet-garden/> for more information.

Young Peoples Activities



Happy New Year everyone! I hope that you had a great Christmas and a positive start to 2025. As always, there is lots going on at St Peter's Hextable and St Paul's Swanley Village over the next few months. Here are just some of the events coming up, and some of the regular groups for children, teenagers, and families that we would love to see you at!

Regular Groups

Wednesdays 6:30pm - The Lighthouse Youth Group

Lighthouse Youth is a youth group that meets in the Next Door Hextable Cafe every Wednesday from 6:30pm - 8:00pm. We eat dinner together and then take part in a range of different games and activities, as well as exploring different topics that matter to young people and discussing questions about life, faith, and more.

Thursdays 1:30pm - Baby and Toddler Group

Our baby and toddler group meets in the main church hall (St Peter's) every Thursday during term time from 1:30-3:00pm. This is a free group and is aimed at parents/carers/grandparents/families etc with babies and toddlers from 0 months up to 4 years (starting school age). We have a range of toys, games, and crafts as well as free tea, coffee, and biscuits. We also put out a table each week where people can bring donations of toys, clothes, and games which anyone at the group can then take for free.

Thursdays (Every Other Week) 4:00-5:00pm - After School Club

Twice a month on a Thursday in the main church hall (St Peter's) we run our After School Club, a group aimed at primary school age children and their families. This is an hour of crafts, games, and baking activities. We also offer free tea, coffee and biscuits and a toast station.

Sundays 10:30-12:00

Every Sunday during our 10:30am service at St Peter's we have three different groups for children and young people (2-6s, 7-11s, 11-17s). These sessions are made up of games and activities as well as exploring a bible story or passage in an age appropriate way. Everyone is welcome!

Upcoming Events

The Big Easter Adventure! - Saturday 19th April 10:30am-1:00pm

Come along to St Peter's on Easter Saturday from 10:30 to take part in the "Big Easter Adventure!". Aimed at families with primary school aged children, you will be given a map and will go off on an adventure to different rooms and stations around the church to learn more about the easter story and collect chocolate prizes along the way! Please contact me (Bea) to book this in advance! (contact details are below)

Easter Sunday Service - Sunday 20th April 10:30am. Our Easter Sunday church service at St Peter's is aimed at all ages! We'd love to see you there.

Future Date for your Diary - Summer Holiday Club 2025

Our highly popular summer holiday club is back this year from the 5th-7th August! **More details will follow soon and booking for this will open 1st May 2025.** This event usually sells out very quickly so be sure to book early to secure a place for your child/children!

Please feel free to contact me to ask any questions about these groups and events or about anything else. My email is bea@stph.org.uk or I am often in the office at St Peter's during the week!

Regular Church services

Sundays 8.30am - Holy Communion at 8.30am (about 45mins) at **St Paul's**

Sundays 10.30am - informal service of band-led worship, teaching and ministry, with a programme for children during the service (about 75 mins) at **St Peter's**

First Sunday of the month 6.30pm 'Overflow' - a contemporary-style service of worship (about 75 mins) at **St Peter's**

For more details see www.stph.org.uk/ or ring the church office: 01322 662320

Swanley Village Home or 'Life' Group

We meet fortnightly, usually on Thursdays at 7.45pm, at the Old Vicarage in School Lane but also in other homes in the village. Meetings are open to all, whether or not people have a church affiliation.

For further information contact David and Pauline Pearson (Pine Cottage, Beechenlea Lane - 01322 614237 or 07836 376 803) or any member of the group for further information.



**Swanley Therapy
Centre**

Summer Fete

Saturday 14th June

2-5pm

***The Old Vicarage School Lane Swanley
Village BR8 7PJ***



Swanley History Group

Our group welcomes residents and non residents of Swanley and surrounding areas interested in the history of our district and broader historical topics.



HOPS, INNS & PILGRIMS ON THE SOUTH SIDE OF OLD LONDON BRIDGE

Presented by JOHN HALLIGAN

WED. 05 MARCH 2025

7.00 for 7.30 pm start

THE ALEXANDRA SUITE, ST. MARY'S ROAD, SWANLEY, BR8 7BU

For further information- visit our webpage swanleyhistorygroup.weebly.com or email swanleyhistorygroup@hotmail.co.uk

Subject to change at short notice if the need arises

Discover Inclusion

Support and training provided to schools and families of SEND children

Kerry is an experienced neurodivergent teacher and advocate who works with schools and families to ensure SEND children receive the support they need to communicate and access their education.

info@discoverinclusion.co.uk | 07753 892647



Hextable and Swanley Village WI

Please come and join us on

the 4th Thursday of every month 7.30 pm at

Five Wents Memorial, Swanley Lane, Swanley BR8 7LD

Regular events, outings and speakers :

27th March - Can Can... High Kicks & Frilly Knickers

23^d April - Fund Raising Day

24th April - Bob Newhart Rides Again

22nd May - History of Smuggling in Kent



theWI
INSPIRING WOMEN

Contact Details: Christine 01322 556660 or 07941261920

AWARD WINNING APARTMENTS FOR SALE

Exclusively for the over 60s



Your new chapter awaits...

Discover how **affordable** and **hassle-free** life at Churchill can be. With our unique range of options perfectly tailored to your needs, you can **save time and money** and focus on the things you love.

Stamp Duty Paid* • Winter Fuel Allowance Paid*

These fantastic offers are available when you reserve by Friday 14th March 2025.

Call us on **01322 788597** to find out more



SWANLEY

Burlington Lodge, Birchwood Park Avenue BR8 7AU

Open Tues - Fri, 10am - 5pm and Sat, 10am - 4.30pm

No appointment needed - just pop in!

✉ burlington.lodge@crl.co.uk

🌐 crl.co.uk/burlington-lodge


Churchill
Living

Your lifestyle • Your choice

*Any Stamp Duty will be paid in full by Churchill on apartments for sale prior to 31st December 2024. If you no longer receive Winter Fuel Allowance, we'll give you £300 a year for 5 years. Churchill has the right to withdraw both offers at any time. T&Cs apply, visit churchill-living.co.uk/terms-and-conditions for full details or call us on 0800 084 6472



Pretty Little Styles

Personalised cards & more made
with love by Carly Styles in Swanley Village



Instagram
@pretty__little__styles

Facebook
Pretty Little Styles

Email
pretty_little_styles@outlook.com

Tel
07702216240

#1 One City Maintenance Ltd

Property Maintenance company based in Swanley Village

We provide a wide range of services

- Decorating
- Plumbing
- Tiling
- Flooring
- House extensions
- Complete renovations
- All internal/external repairs
- Emergency call outs

Checkatrade
Approved Contractor

Contact us today for a
free quotation

Tel: 07703 800086 / 07702 158863

Email: ocm.ltd@btinternet.com



**THE ARK CATTERY –
1 Highview, Highlands Hill, Swanley Village**

HEATED INDOOR PENS - VIEWINGS WELCOME

We offer luxury boarding facilities exclusively for cats
☎ 01322 668584 / 07966 999260



SWANLEY VILLAGE HONEY
Collected by my Bees at
Elizabethan Cottage, Swanley Village Rd
Beekeeping since 2009
454g Jar £7
Donnahoy@icloud.com

Would you like to:

Have any old faded or damaged photos repaired and restored?

Whether they are torn, dark or faded – all this can be remedied.

View all your family photos (slides/prints/digital) all on your TV, all in folders and titled optimised and supplied on a flash drive.

Would you like to:

Have an album made up with photos dated and titled --- as a gift for family or expertly framed with bevelled matte

Who you gonna call

Dennis Molyneux 01322 669523 or call at 2 Beechenlea Lane Swanley Village

Mobile 07 5050 37333

www.molyneux-photography.co.uk



The Lamb Inn Home Cooked Food Served Daily

Food Serving times: Monday –
Saturday 12 Noon to 3.30pm

Sunday 12.30 to 3.30.

It is **FREE** for all Swanley Village residents to advertise, sell items or contribute to the Swanley Village Newsletter. Costs to 'outsiders' are £5 per issue for half a page.

If anyone would like an article to be included in the **Next** Newsletter, please contact the Editor: SwanleyVillageRA@outlook.com

This newsletter is also published on the web site: www.swanleyvillage.uk

Contact Details Swanley Village Trust

If you have stopped receiving updates/messages by email

HAVE YOU CHANGED YOUR EMAIL ADDRESS?

You can update your details and/or if you wish to add your name to the email list for regular updates please contact:

Bob Wallis (swanley_village_trust@yahoo.co.uk)

Thanks to everyone who helps to produce this Newsletter and to distribute it around the village